



AUTOPILOT DRIVE SOLUTIONS



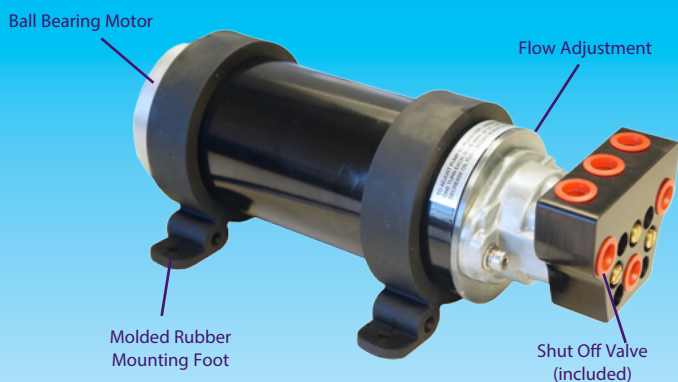
octopusdrives.com

Hydraulic Reversing Pumps

THE BENEFITS OF OCTOPUS REVERSING PUMPS

- PISTON PUMP

**ONLY
THREE
MOVING
PARTS!**



- Available in 12 Volts or 24 Volts

RELIABLE - Patented piston pump technology with only three moving parts

TWICE THE POWER - Delivers over twice the hydraulic output per watt of input

ADJUSTABLE FLOW RATE - Configure performance to suit your vessel

EASY SERVICING - Shut off valves allow removal without draining steering system

SELECTION GUIDE

PART No.	FLOW RATE (Adjustable)	CYLINDER RANGE
1012	500cc - 1L/min	150-300cc (9-18in³)
1212	600cc - 1.2L/min	180-360cc (11-22in³)
2012	1.0 - 2.0L/min	245-500cc (15-30in³)

- GEAR PUMP



SELECTION GUIDE

PART No.	FLOW RATE	CYLINDER RANGE
OCTAFG0612	600cc/min	6-9 ci CYLINDER
OCTAFG1012	1000cc/min	10-15 ci CYLINDER
OCTAFG1612	1600cc/min	16-24 ci CYLINDER

HIGH EFFICIENCY - Industry leading efficiency minimizes power consumption

LOW NOISE - New design offers significantly quieter operation

LIGHTWEIGHT & COMPACT - Small footprint offers greater installation flexibility

WIDE RANGE OF PRODUCTS - From 600 to 1600cc/minute, 12v and 24v options

pinpoint accuracy...
... maximum performance!

Hydraulic Constant Running Pumps

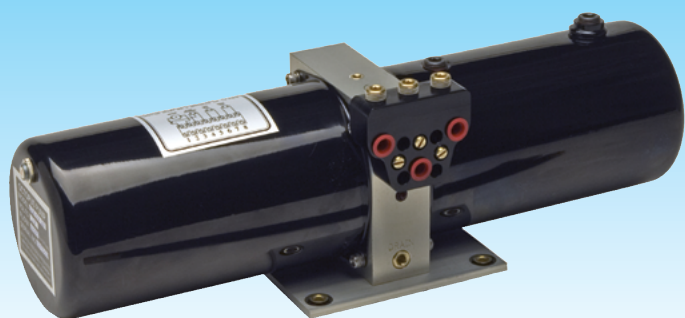
SUITABLE FOR COMMERCIAL VESSELS AND LARGER YACHTS

POWERFUL - Suitable for steering cylinders up to 200cu in (3500cc)

ECONOMICAL - High performance, low power consumption, compact design

FULLY INTEGRATED DESIGN - No complicated external pipes or fittings to break or leak

CRA PUMPSETS



- For steering cylinders up to 65cu in (1000cc)
- Available in 12 Volts or 24 Volts

CRB PUMPSETS



- For steering cylinders up to 200cu in (3500cc)
- DC models: 12v, 24v
- AC models: 110v or 220v single phase
220v, 460v or 575v three phase

power & reliability
whenever you need it

Hydraulic Linear Drives

POWERFUL, EFFICIENT DRIVES FOR SAILBOATS

RELIABLE - Only three moving parts, increasing reliability

EFFICIENT - Three times more efficient, half the battery consumption

ADJUSTABLE FLOW RATE - Configure performance to suit your vessel



LAM MOUNTED STYLE



LAR REMOTE STYLE

DRIVES Order Codes	AVERAGE / MAX CURRENT (Piston pump efficiency will reduce actual consumption)	FEATURES				PERFORMANCE			YACHT SELECTION	
		Volts	Cylinder Bore	Variable Flow Rate	Stroke	Hardover Time (Suggested)	Max Rudder Torque	Peak Thrust	Max Boat Length	Max Laden Displacement
1012LAM7 1012LAR7	4 – 6A / 19A	12V	38MM	500cc - 1 litre/min	178mm 7in	12 - 14 sec	750Nm 6,630lbin	400Kg 882lbs	14m 45ft	11,000Kg 24,200lbs
1024LAM7 1024LAR7	2 – 3A / 10A	24V	38MM	500cc - 1 litre/min	178mm 7in	12 - 14 sec	750Nm 6,630lbin	400Kg 882lbs	14m 45ft	11,000Kg 24,200lbs
1212LAM12 1212LAR12	4 – 6A / 19A	12V	38MM	600cc - 1.2 litre/min	305mm 12in	14 - 16 sec	1,200Nm 10,600lbin	400Kg 882lbs	18m 60ft	15,000Kg 33,000lbs
1224LAM12 1224LAR12	2 – 3A / 10A	24V	38MM	600cc - 1.2 litre/min Reversing	305mm 12in	14 - 16 sec	1,200Nm 10,600lbin	400Kg 882lbs	18m 60ft	15,000Kg 33,000lbs
2012LAR9	6 – 8 / 22A	12V	45MM	1 - 2 litres/min Reversing	228.6mm 9in	14 - 16 sec	1,200Nm 10,600lbin	600Kg 1,322lbs	22m 70ft	17,000Kg 37,500lbs
2024LAR9	3 – 4A / 11A	24V	45MM	1 - 2 litres/min Reversing	228.6mm 9in	14 - 16 sec	1,200Nm 10,600lbin	600Kg 1,322lbs	22m 70ft	17,000Kg 37,500lbs
2012LAR12	6 – 8 / 22A	12V	45MM	1 - 2 litres/min Reversing	305mm 12in	14 - 16 sec	1,500Nm 13,200lbin	600Kg 1,322lbs	24.5m 80ft	20,000Kg 44,000lbs
2024LAR12	3 – 4A / 11A	24V	45MM	1 - 2 litres/min Reversing	305mm 12in	14 - 16 sec	1,500Nm 13,200lbin	600Kg 1,322lbs	24.5m 80ft	20,000Kg 44,500lbs

half the consumption

twice the range!

Type RS Sailboat Drive - Inboard Systems

COMPACT AND CONVENIENT SOLUTION



DISCREET INSTALLATION - All components mounted out of sight

EASY TO FIT - Can be located in very small spaces

PERFORMANCE - Responsive drive, little feedback resistance in Standby Mode

IDEAL FOR INBOARD ENGINED BOATS UP TO 32ft (10m) - 13,200lbs (6,000kg)

OCTAFMDRESYSE Sailboat Drive-Inboard System - 8" stroke (up to 32 feet or up to 13200lbs)

OCTAFMDRSSYS12 Sailboat Drive-Inboard System - long stroke(12") (up to 38 feet or up to 15400lbs)

OCTAFMDRSSYS Sailboat Drive-Inboard System - short stroke (9") (up to 38 feet or up to 15400lbs)



Type R Mechanical Remote Drive - Sterndrive Systems

UNIQUE PILOT DRIVE FOR STERNDRIVE APPLICATIONS

LOW COST SOLUTION - No need to change to hydraulic steering

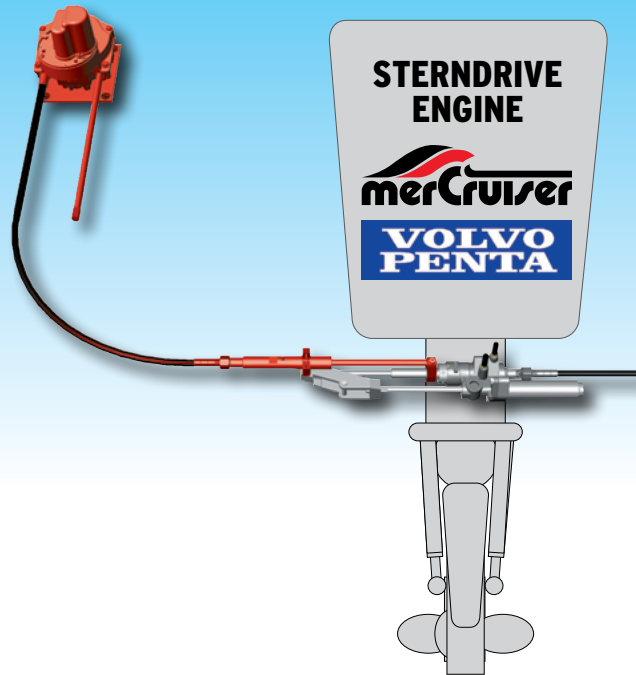
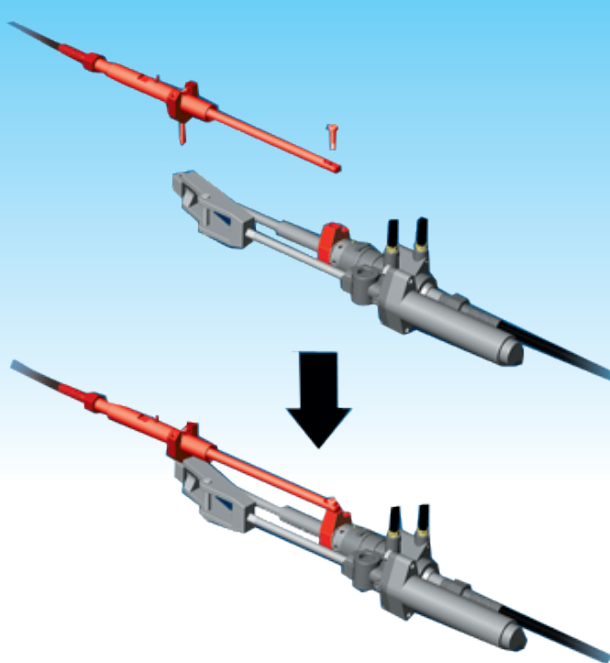
EASY TO FIT - Simple to install kits

TIME SAVING - Rudder feedback option mounts directly on drive

SAFE - Manual override without disengaging the autopilot



COMPATIBLE WITH ALL MAJOR AUTOPILOT BRAND ELECTRONICS



STRAIGHTFORWARD INSTALLATION

The Type R Remote Drive System makes sterndrive installations easy for both single or dual engine systems. The installation kit simply clamps to the steering cylinder with no drilling or cutting required. Two packs are available to suit the most common Mercruiser and Volvo-Penta sterndrive systems.

OCTAFMDRESYSA Sterndrive System-Mercruiser from 1994, North American Volvo from 1997

OCTAFMDRESYSB Sterndrive System-Mercruiser from 1983-93, European Volvo Diesel from 1994

- Kits available with 6 or 9 ft steering cable

Type S/T Dashboard Drives

UNIQUE AUTOPILOT DRIVES FOR CABLE STEERED BOATS

PROFESSIONAL SOLUTION - Replaces manual helm with a manual helm/autopilot drive combination

LOW COST SOLUTION - No need to change to hydraulic steering

EASY TO FIT - Simple to install kits

TIME SAVING - Rudder feedback option mounts directly on drive

TYPE S BEHIND DASH DRIVE

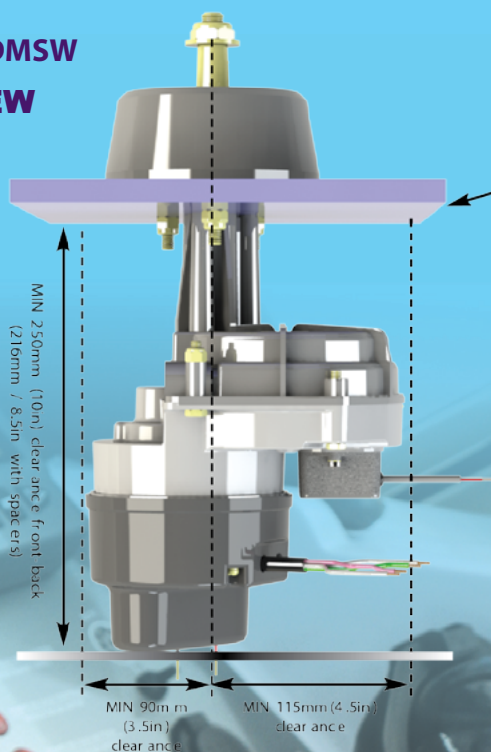
The Straight shaft drive unit replaces the manual drive used on cable steered boats and is mounted directly behind the dash.

TYPE T TILT BEHIND DASH DRIVE

It uses the front end from Teleflex SH91800 (not supplied).

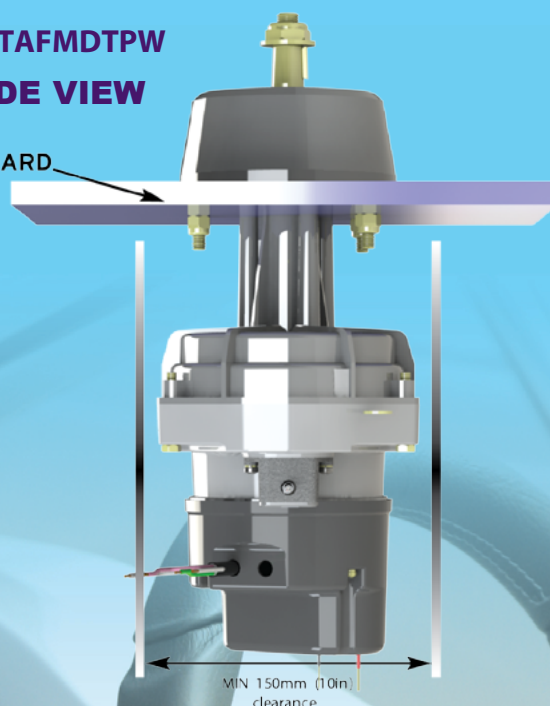
OCTAFMDMSW

TOP VIEW



OCTAFMDTPW

SIDE VIEW



OCTOPUS HYDRAULIC STEERING FLUID



Engineered for use in all Hydraulic steering systems

- ISO 15 low temp mineral hydraulic fluid
- Corrosion inhibited
- Oxidation resistant
- Excellent anti wear performance
- Made in Canada by Canada Metal Pacific Ltd

PID 1 Gallon (4/case): OCTOIL1USG

PID 1USQ (12/case): OCTOIL1USQ

OCTOPUS HOSE AND FITTING KIT



Makes Autopilot Installation a breeze

Essential option for any Pilot installation, includes NPT and ORB fittings to work with 2014 or newer Seastar Helms

PID OC17SUK42- 30" Hose and Fitting Kit, including ORB and NPT Helm Fittings

MECHANICAL DRIVE ACCESSORIES



OC15SUK10 90 degree Bezel Mounting Kit for Type S Straight Shaft Drive



OC15SUK07 Steering Cable Adapter Kit for TFX SSC72, Uflex M47, Morse 304415



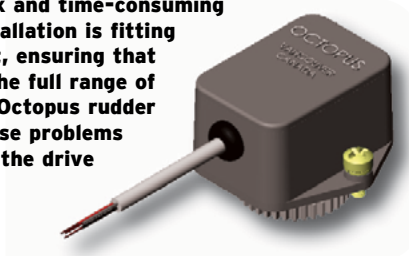
OC15SUK08 Steering Cable Adapter Kit for TFX SSC62, Uflex M66



OC15SUK16 Spacer Kit x 19mm for 90° Bezel Kit
OC15SUK18 Spacer Kit x 13mm for TFX Performance Tilt Mechanism (Type T)

OPTIONAL RUDDER FEEDBACK UNIT

One of the most complex and time-consuming aspects of autopilot installation is fitting the rudder feedback unit, ensuring that the geometry matches the full range of rudder movement. The Octopus rudder feedback unit solves these problems as it mounts directly to the drive unit itself.



RUDDER FEEDBACK MODULES

OC15SUK27 Universal Model for all autopilots



OC15SUK27A For Comnav & Sitex Autopilots

OC15SUK27B For Raymarine Autopilots

OC15SUK27D For Coursemaster & Simrad Autopilots

OC15SUK27E For Garmin, Furuno, Navman & TMQ Autopilots



OC15SUK83 Simrad Resistance to Frequency Conversion Kit - Required for Simrad Autopilots

©2016 Canada Metal (Pacific) Ltd

OCTOPUS PRODUCTS

7733 Progress Way
Delta, BC
Canada V4G 1A3
Phone: 1-604-940-2010
Fax: 1-604-952-2650
Email: sales@octopusdrives.com
Website : www.octopusdrives.com

OCTOPUS EUROPE CB

PG13 222 La Murta
Alzira 46600
Valencia
Spain
Phone: 00 34 962 120 052
Email: sales@octopuseurope.com
Website : www.octopuseurope.com



OCTBRO V2