

# WOODSHOP NEWS<sup>®</sup>

THE

# 2021

## BLACK BOOK RESOURCE GUIDE

Fellow Marketers,

The 2021 Resource Guide offers you a FREE listing of the products you manufacturer/resell, in up to 400 categories, while also allowing you and potential buyers the ability to pinpoint states in which you do business. Marketing upgrades are available to increase the amount of information on your company and to move you far-forward in the search results.

Online – All “FREE” listings provide buyers the ability to forward the information they find or bookmark it for future reference. Primary contact information is also included— company name, address and phone; all linked to categories of products vendors work with. Please review the following to see the value and difference that each level of enhancement provides.

We hope our latest offering proves beneficial to you and your company throughout 2021.

**URGENT – November 23rd deadline for Print Release**

## Listing - Level Features

	FREE	BASIC	PREMIUM	SHOWCASE
<b>PRINT</b>		<b>\$550</b>	<b>\$950</b>	<b>\$3,000</b>
<b>Company Name</b>	Black font	Bold black	Bold Red	Bold Red with screen
<b>Categories per listing</b>	unlimited	unlimited	unlimited	unlimited
<b>Street Address</b>	<b>X</b>	<b>X</b>	yes	yes
<b>Phone</b>	yes	plus FAX	plus FAX	plus FAX
<b>Website</b>	<b>X</b>	yes	yes	yes
<b>E-mail</b>	<b>X</b>	<b>X</b>	yes	yes
<b>Logo</b>	<b>X</b>	yes	yes	yes
<b>QR Code</b>	<b>X</b>	<b>X</b>	yes	yes
<b>30 Words of copy - approx.</b>	<b>X</b>	<b>X</b>	yes	yes

## ONLINE

<b>Company Name, Address &amp; Phone</b>	yes	yes	yes	yes
<b>Categories per listing</b>	unlimited	unlimited	unlimited	unlimited
<b>Logo</b>	<b>X</b>	<b>X</b>	yes	yes
<b>Website</b>	<b>X</b>	yes	yes	yes
<b>E-mail</b>	<b>X</b>	yes	yes	yes
<b>3 additional web links</b>	<b>X</b>	yes	yes	yes
<b>30 Words of copy- approx</b>	<b>X</b>	<b>X</b>	yes	yes
<b>Banner ads</b>	<b>X</b>	<b>X</b>	<b>X</b>	yes

## COMPANY PAGE PROFILE

<b>30 words of copy- approx.</b>	<b>X</b>	yes	yes	yes
<b>Company overview</b>	<b>X</b>	<b>X</b>	yes	yes
<b>9 images</b>	<b>X</b>	<b>X</b>	yes	yes
<b>1 video</b>	<b>X</b>	<b>X</b>	yes	yes
<b>5 attachments</b>	<b>X</b>	<b>X</b>	yes	yes

## EMARKETING

<b>Custom e-mail blast</b>	<b>X</b>	<b>X</b>	<b>X</b>	yes
----------------------------	----------	----------	----------	-----

## CNC EQUIPMENT & SERVICES

### CNC Cutting Systems

Automec, Inc.  
**AXYZ Automation Inc.**  
 C. R. Onsrud Inc.  
**CAMaster CNC Inc.**  
 CDM Industries CNC Routers and Lasers  
 Centra Leasing, Inc.  
 Cleveland Tool & Cutter, Inc.  
 CNC Sales of New England, LLC  
 Donek Tools - CNC Knife Cutting Tools  
 First Choice Industrial, LLC  
 FMT Machinery  
**Hendrick Manufacturing Corporation**  
**Laguna Tools**  
 Lighthouse Machinery & Tool  
 Limtech Industries, Inc.  
**MULTICAM, INC.**  
 NEWCNC.com  
 Normand Woodworking Machinery, Inc.  
 OMGA, Inc.  
 R & R Drummond, Inc.  
**Rockler Woodworking and Hardware**  
**SCM Group North America**  
**SHOPBOT TOOLS, INC.**  
 SoCalMachinery.com  
 Swan Woodworking Machinery  
**Techno, Inc. CNC Router Systems**  
**Thermwood Corporation**  
 TigerStop LLC  
 Wood Werks Supply, Inc.  
 Woodcraft Supply LLC

### CNC Laser Systems

**CAMaster CNC Inc.**  
 CDM Industries CNC Routers and Lasers  
 Cleveland Tool & Cutter, Inc.  
 First Choice Industrial, LLC  
 Hermance Machine Co.  
 Kern Lasers  
**Laguna Tools**  
 Lighthouse Machinery & Tool  
**MULTICAM, INC.**  
 SoCalMachinery.com  
 Swan Woodworking Machinery  
 Techno, Inc. CNC Router Systems  
 TigerStop LLC

### CNC Routers, Multi-Head

Advanced Solutions, LLC  
**AXYZ Automation Inc.**  
 Brians Tool Sales  
 C. R. Onsrud Inc.  
**CAMaster CNC Inc.**  
 CDM Industries  
 CNC Routers and Lasers  
 Centra Leasing, Inc.  
**Charles G.G. Schmidt**  
 Cleveland Tool & Cutter, Inc.  
 CNC Parts Dept., Inc.  
 CNC Sales of New England, LLC  
 D.S. Brown Machinery, Inc.  
 Ditto Sales Inc.  
 Douglas Machine Co., Inc.  
 EX-FACTORY INC.  
 First Choice Industrial, LLC  
 FMT Machinery  
**Hendrick Manufacturing Corporation**  
 Hermance Machine Co.  
 Jinan Astech Tools Technology Co., Ltd.  
 John G Weber  
 Keim Lumber Company  
 Komo Machine, Inc.

## SCM Group North America

**SHOPBOT TOOLS, INC.**  
 SoCalMachinery.com  
 Stiles Machinery  
 Swan Woodworking Machinery  
**Techno, Inc. CNC Router Systems**  
 The CB Tool Group  
**Thermwood Corporation**  
 Tritec Associates Inc.  
 VacuumPods.com, Inc.  
 Wood Werks Supply, Inc.

### CNC Routers, Single Head

Advanced Solutions, LLC  
 AXYZ Automation Inc.  
 Brians Tool Sales  
 C. R. Onsrud Inc.  
**CAMaster CNC Inc.**  
 CDM Industries CNC Routers and Lasers  
**Charles G.G. Schmidt**  
 Cleveland Tool & Cutter, Inc.  
 CNC Sales of New England, LLC  
 D.S. Brown Machinery, Inc.  
 Ditto Sales Inc.

Line Co., Inc.  
 NC.  
 Industrial, LLC

FMT Machinery  
**Hendrick Manufacturing Corporation**  
 Hermance Machine Co.  
 Jinan Astech Tools Technology Co., Ltd.  
 John G Weber  
 Komo Machine, Inc.  
 L.L. Johnson Lumber Mfg. Co. & Johnson's  
 Workbench

**Laguna Tools**  
 Lighthouse Machinery & Tool  
 Limtech Industries, Inc.

Masterwood CNC

**MULTICAM, INC.**

NEWCNC.com

Normand Woodworking Machinery, Inc.

**Rockler Woodworking and Hardware**

RT Machine Company

**SCM Group North America**

**SHOPBOT TOOLS, INC.**

Silver Machine Inc.

SoCalMachinery.com

Stiles Machinery

Swan Woodworking Machinery

Techno, Inc. CNC Router Systems

The CB Tool Group

**Thermwood Corporation**

VacuumPods.com, Inc.

Vetric Ltd.

Vision Engraving & Routing Systems

Wood Werks Supply, Inc.

### CNC Systems, Other

Advanced Solutions, LLC  
 ArtCAM developed by Delcam  
**Brians Tool Sales**  
 C. R. Onsrud Inc.  
**CAMaster CNC Inc.**  
 CDM Industries CNC Routers and Lasers  
 Cleveland Tool & Cutter, Inc.  
 CNC Parts Dept., Inc.  
 Colonial Saw Company, Inc.  
 Ditto Sales Inc.  
 Donek Tools - CNC Knife Cutting Tools  
 Douglas Machine Co., Inc.  
 First Choice Industrial, LLC  
 FMT Machinery  
**Hendrick Manufacturing Corporation**  
 Hermance Machine Co.  
 Jinan Astech Tools Technology Co., Ltd.  
 John G Weber  
 Larick Machinery, Inc.  
 Lighthouse Machinery & Tool  
 Limtech Industries, Inc.

**THOMPSON MAHOGANY**  
215-624-1866

**TIDEWATER MILLWORK**  
207-443-8020

**TIGERSTOP LLC**  
360-254-0661

SHOWCASE  
SPONSOR

**SAWGEAR™**  
automatic length measuring

## TigerStop LLC / SawGear

12909 NE 95th St.  
Ph: 360-254-0661  
Fx: 360-260-0755  
Website: <http://www.sawgear.com>  
Email: [sales@tigerstop.com](mailto:sales@tigerstop.com)  
TigerStop is the global leader in automated stop/gauge and pusher systems. Manufacturers of the rugged and portable SawGear automatic length positioning system, SawGear streamlines the building process from start to finish for your miter chop saw.

PREMIUM  
LISTING



**TIMBERCRAFT DRAWERS**  
800-345-4930

**TIMESAVERS, INC.**  
763-488-6600, 800-537-3111

**TIMOTHY CONTI CABINETMAKERS**  
860-961-8635

**TOOL ZONE**  
303-252-8500, 866-930-8665

**TOOLS PLUS**  
203-573-0750, 800-222-6133

**TOP DRAWER COMPONENTS**  
800-745-9540

**TOTAL SAW SOLUTIONS**  
1-800-773-3133

**TOTAL SAW SOLUTIONS, INC.**  
800-773-3133

**TOWER MFG. CORP.**  
401-467-7550

**TRESCO BY REV-A-SHELF**  
502-499-5835

**TRG PRODUCTS-BRIWAX**  
800-327-4929

**TRITEC ASSOCIATES INC.**  
703-904-7890

**TURNINGS UNLIMITED**  
937-588-4050

**UNISOURCE OFFICE FURNITURE PARTS, INC.**  
616-455-9400, 800-598-7278

**UNIVERSAL LASER SYSTEMS**  
480-483-1214, 800-859-7033

**URBAN FOREST RECYCLING**  
305-664-2924

**US ROUTER TOOLS**  
888-720-TOOL (8665)

**VACUUMPODS.COM, INC.**  
214-760-8992, 877-790-PODS

**VAN DYKE RESTORERS WHOLESALE**  
605-996-2840, 800-495-9689

**VECTRIC LTD.**  
+44 (0) 1527 460 459

**VISION ENGRAVING & ROUTING SYSTEMS**  
602-439-0600, 888-637-1737

**VORTEX TOOL CO., INC.**  
715-355-7707, 800-355-7708



BASIC  
LISTING

## Vortex Tool Company Inc.

Ph: 800-355-7708  
Fx: 715-355-7353  
Website: <http://www.vortextool.com>

**W SQUARED DIAMOND TOOL**  
828-328-8578

**WAGNER METERS**  
800-634-9961

**WALTHER PILOT NORTH AMERICA**  
586-598-0347

**WALZCRAFT**  
800-237-1326

**WALZCRAFT CABINET REFACING ACADEMY**  
800-237-1326

**WEINIG**  
704-799-0100

**WEST PENN HARDWOODS, INC.**  
716-373-6434

**WGH WOODWORKING**  
520-798-1133

**WHITE OAK FARM AND SAWMILL**  
774 285 2952

**WILLIAMS & HUSSEY MACHINE CO., INC.**  
603-732-0219

**WILWOODMAN, INC.**  
386-446-4248

**WIRELINE/MERCHANDISING SYSTEMS, INC.**  
510.477.9100

**WISEWOOD VENEER**  
586.825.2387

**WITMER WOOD PRODUCTS, LLC**  
800-643-1158

**WOOD GRAPHIX**  
800-335-8234

**WOOD MACHINERY MANUFACTURERS OF AMERICA**  
215-564-3484

**WOOD WERKS SUPPLY, INC.**  
847-526-1411

**WOOD WERKS SUPPLY, INC.**  
(800) 860-9375

**WOODCRAFT SUPPLY LLC**  
800-221-1153

**WOODPRO INSURANCE A DIVISION OF BOWERMASTER & ASSOCIATES**  
888-825-4322

**WOODSHOP NEWS**  
Shaping the Successful Shop

## Woodshop News

10 Bokum Road  
Ph: 860-767-3200, 800-444-7686  
Fx: 860-767-1048  
Website: <http://www.woodshopnews.com>  
Email: [rory@woodshopnews.com](mailto:rory@woodshopnews.com)

Woodshop News is written for the small to mid-sized professional woodshops. Woodworkers in these shops are the heart of the woodworking industry - they are the artisans, the master craftsman and professional woodworkers that live for their craft. A serious factor they all have in common is their constant desire to continue to invest in their passion in woodworking. They are constantly upgrading their skills, workshops and tools to ensure their personal and business growth.



## Woodstock International, Inc.

P.O. Box 2309  
Ph: 800-840-8420  
Fx: 800-647-8801  
Website: <http://www.Shopfox.biz>  
Email: [sales@shopfox.biz](mailto:sales@shopfox.biz)  
High Quality Machines & Tools since our inception back in the late 1980's. We are a one-stop supplier of woodworking, metalworking, tools and accessories for many of our distributors. We provide the best overall value, selection and service.



## Woodworker's Supply, Inc.

5604 Alameda Place NE  
Ph: 505-797-1487, 800-321-9841  
Fx: 800-343-9663  
Website: <http://www.woodworker.com>  
Email: [customerservice@woodworker.com](mailto:customerservice@woodworker.com)  
Woodworker's Supply is the expert's source for woodworking tools & hardware. We stock over 23,000 items & have the latest bench top and stationary machinery. From traditional hand tools to high-tech digital measuring devices, we have what you need.



**WOODWORKERS TOOL WORKS**  
715-662-2015, 800-475-9991

**WOODWORKING MACHINERY INDUSTRY ASSOCIATION**  
410-628-1970

**ZAMBUS, INC.**  
201-450-6127

**ZAPKUT LTD.**  
011 44 1189701950

## More News From Forrest

# 5 Newest Blades For Discerning Woodworkers

Forrest sets the standard for excellence with these latest top-quality blades:

- **Ply Veneer Worker.** Best for rip and cross cutting two-sided plywood (finished or unfinished) and cross cutting solid woods. Has 70 teeth, 10° hook, high alternate top bevel grind.
- **Woodworker II 48-Tooth** general-purpose blade. Has a 20° face hook, 25° bevel, and sharp points for clean, quiet cross-grain slicing.
- **"Signature Line" Chop Master** for quiet, precise cutting and less splintering. Has 90 teeth, a -5° hook for feed rate control, and re-designed angles.



- **2- & 4-Piece Finger Joint Sets.** Each reversible, interlocking 8" blade has 24 teeth. Ideal for rabbets and grooves. Sets make 3/16" and 5/16" cuts or 1/4" and 3/8" cuts.
- **Thin Kerf Dados** for clean cutting 3/16" to 1/4" grooves in thin plywood and man-made materials. Available in two-piece and three-piece sets.

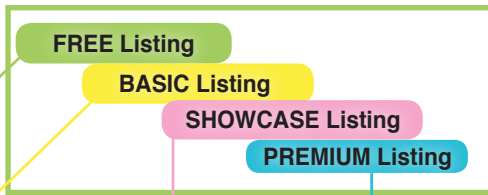
Our blades are American-made and have a 30-day, money-back guarantee. Custom sizes available. Order from Forrest dealers or retailers, by going online, or by calling us directly.

**FORREST**  
The First Choice of Serious Woodworkers Since 1946

[www.ForrestBlades.com](http://www.ForrestBlades.com) 1-800-733-7111 (In NJ, call 973-473-5236)

© 2014 Forrest Manufacturing Code WN

# In Print



**ROBERTS PLYWOOD**  
Ph: 631-586-7700



**ROCKLER WOODWORKING AND HARDWARE**

Ph: 800-233-9359, 800-865-1229  
Fx: 1-763-478-8395  
Website: www.Rockler.com

**ROLLING TRADES INC.**  
Ph: 718-576-1559

**RONK ELECTRICAL INDUSTRIES, INC.**  
Ph: 217-563-8333, 800-221-7665

**ROSEWOOD STUDIO**  
Ph: 613-256-8900

**RT MACHINE COMPANY**  
Ph: 570-584-2002

**SAF - SOUTHERN ALUMINUM FINISHING**  
Ph: 770-942-1207, 800-241-7429

**SAFETY SPEED MANUFACTURING CO.**  
Ph: 763-755-1600

**SAGETECH INDUSTRIES LTD.**  
Ph: 011 44 118 970 1950

**SALICE AMERICA, INC.**  
Ph: 704-841-7810, 800-222-9652

**SANDMAN PRODUCTS LLC**  
Ph: 800-265-2008



**SATA SPRAY EQUIPMENT/ DAN-AM COMPANY**

One Sata Drive  
Ph: 507-346-7776, 800-533-8016  
Fx: 507-346-7481  
Email: satajet@satausa.com  
Website: www.scmgroup-usa.com

Paint spray equipment for high or low viscosity materials, solvent or waterborne material, HVLP, RP gravity fed, pressure fed, airless & air assist spray guns. Air assist Piston pumps, high and low press. pumps, vario top spray, pressure paint tanks.



**SAW SYSTEMS PANEL SAW CO., INC.**  
Ph: 770-505-4505, 866-505-4505

**SAWSTOP**  
Ph: 503-570-3200

## Resource Guide Listings

There are 4 levels of listings.  
The stronger your level of involvement the greater your visibility is and the greater the amount of information you can provide potential buyers.

Online results are reported by level and alpha order within each level.

*Listing levels reported in order:*

- **Showcase** (category sponsor) **\$3,000**
- **Premium** **\$950**
- **Basic** **\$550**
- **Free**

## Online Category Search Results

### SHOWCASE

First tier results in alpha order presenting logo & promo copy.

### PREMIUM

Second tier results in alpha order presenting logo & promo copy.

### BASIC LISTING

Third tier results in alpha order.

### FREE LISTING

Fourth tier results in alpha order.

### Bits Blades and Cutters Results



**Amana Tool**

Amana Tool ® is an industry leader for over 40 years specializing in industrial quality solid carbide, insert carbide and carbide-tipped cutting tools

📍 Farmingdale, NY, 11735, United States 📞 800-445-0077

[View Listing](#)

[Send Message](#)



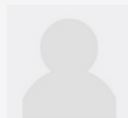
**Grizzly Industrial, Inc.**

Dealers name: Grizzly Industrial - Muncy PA showroom sales contact: address: 1203 Lycoming Mall Circle, Muncy, PA 17756 website:

📍 Bellingham, WA, 98229, United States 📞 800-523-4777

[View Listing](#)

[Send Message](#)

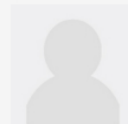


**Vortex Tool Company Inc.**

📍 Schofield, WI, 54476, United States 📞 800-355-7708

[View Listing](#)

[Send Message](#)



**A&H Turf & Specialties Inc.**

📍 Billings, 59101, United States 📞 406-245-8466, 800-548-6323

[View Listing](#)